

## Contents:

Page 2 – EURUSD

Page 3 – GBPUSD

Page 4 – EURGBP

Page 5 – USDJPY

Page 6 – EURJPY

Page 7 – USDCAD

Page 8 – AUDUSD

Page 9 – USDCHF

Page 10 – “Automated” Levels - EURCHF, EURCNY, EURSEK, EURPLN, EURNOK, EURTRY

Page 11 – “Automated” Levels - EURCZK, EURHUF, EURDKK, USDCNY, USDINR, USDILS

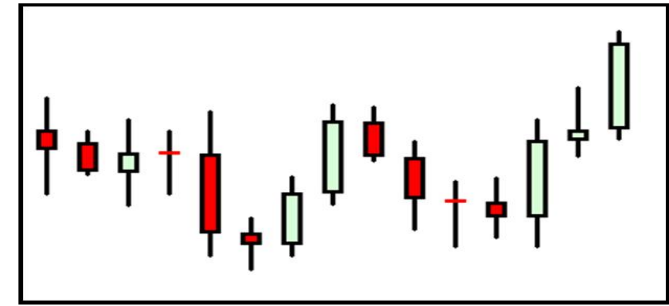
Page 12 – “Automated” Levels - USDKRW, USDMXN, NZDUSD, USDTRY, USDZAR, USDRUB

Page 13 - Disclaimer

## Forex Majors Technical Analysis

13<sup>th</sup> March 2015

Celebrating 15 years Today!

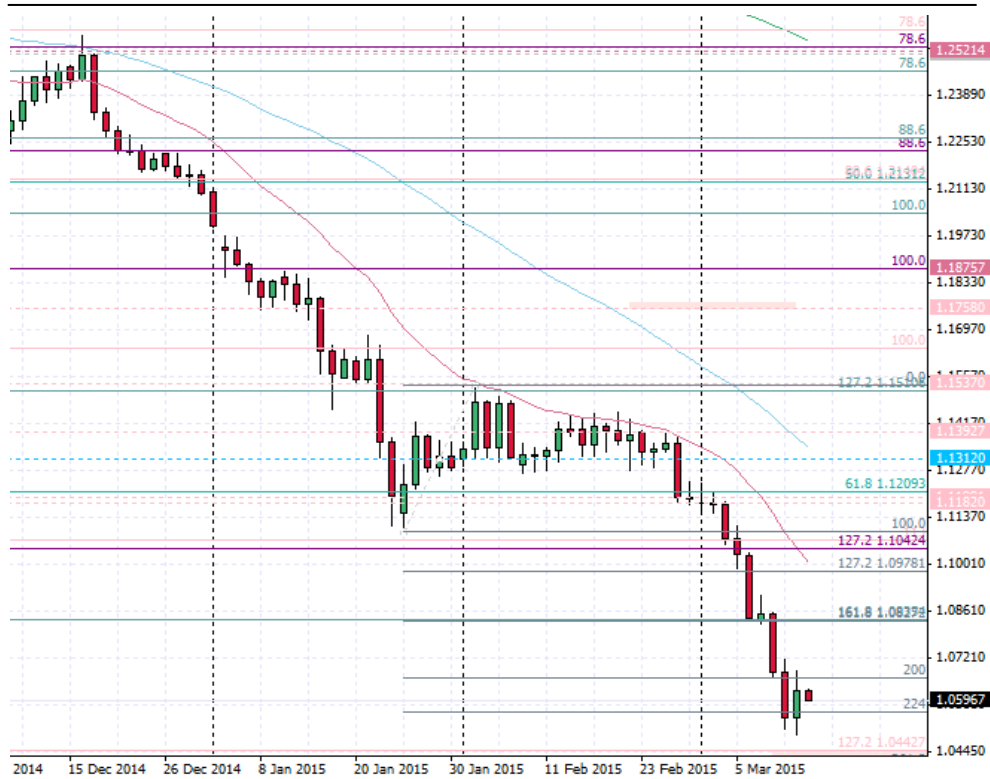


Established 13<sup>th</sup> March 2000



FuturesTechs is proud to support Futures for Kids. Please go to [www.futuresforkids.org.uk](http://www.futuresforkids.org.uk) to see what **YOU** can do!

## Daily Candlestick Chart



### Comment

- ☒ Yesterday was the 11<sup>th</sup> day in a row that EURUSD broke the previous day's low. Will today make history? Beware Friday flows.
- ☒ Candlestick Chart says: A bullish "Piercing Line Pattern" (where we made new lows but closed above 50% of the previous days Marabuzo line) warns of a pause and some profit taking around the round number 1.05. Our next Fibonacci targets are lower at 1.04-1.0430 but profit taking and Friday flows may postpone this until next week. The RSI is extremely oversold and bear market rallies can be fierce. Tuesday's Marabuzo line is the next resistance at 1.0623. Fibonacci trend resistance is at 1.0719
- ☒ Profile charts say: Value at 1.0620 has capped in early trading and vacuums at 1.0576 and 1.0554 could support.
- ☒ Summary: A pause in a strong downtrend. Resistance 1.0719

### Automated levels

|           |               |
|-----------|---------------|
| Open      | 1.0546        |
| High      | 1.0684        |
| Low       | 1.0495        |
| Close     | 1.0635        |
| Change    | <b>0.83%</b>  |
| R3        | 1.0903        |
| R2        | 1.0794        |
| R1        | 1.0714        |
| PP        | <b>1.0605</b> |
| S1        | 1.0525        |
| S2        | 1.0416        |
| S3        | 1.0336        |
| Yest MPHI | 1.0648        |
| Yest POC  | 1.0608        |
| Yest MPLO | 1.0560        |
| 10 SMA    | <b>1.0861</b> |
| 20 SMA    | <b>1.1098</b> |
| 50 SMA    | <b>1.1348</b> |
| ATR       | <b>0.0131</b> |
| RSI       | <b>21</b>     |

### Chart Levels/SkewBar

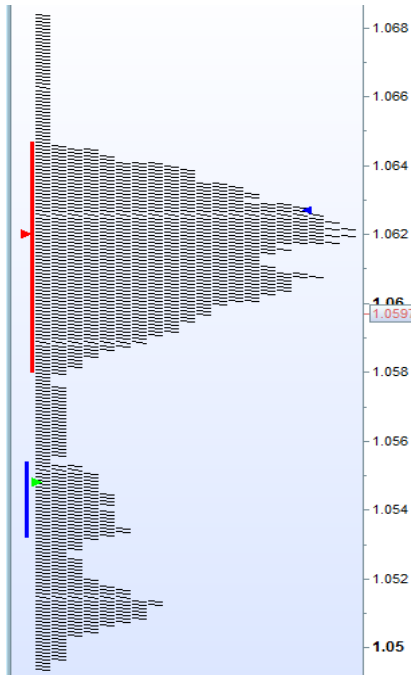
|    |                  |
|----|------------------|
| R4 | <b>1.0815-25</b> |
| R3 | 1.0719           |
| R2 | 1.0699           |
| R1 | 1.0649           |
| S1 | 1.0590           |
| S2 | <b>1.0554</b>    |
| S3 | 1.0493-99        |
| S4 | <b>1.0443</b>    |

EURUSD  
FX Spot

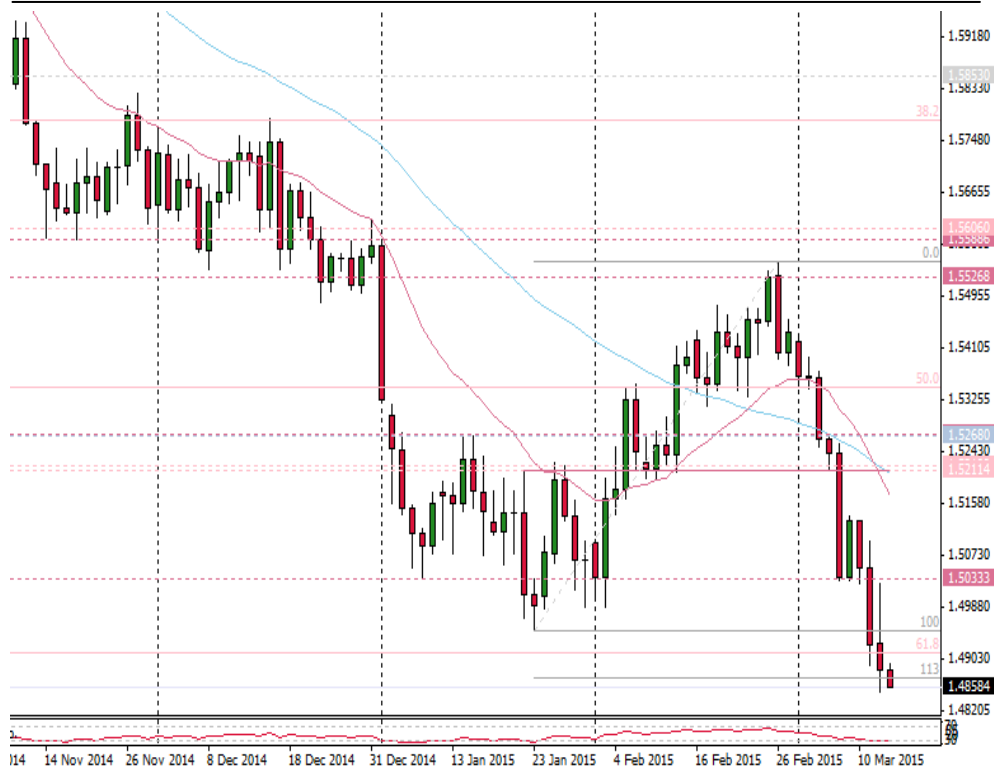


13<sup>th</sup> March 2015

Yesterday's Market Profile



## Daily Candlestick Chart



## Automated levels

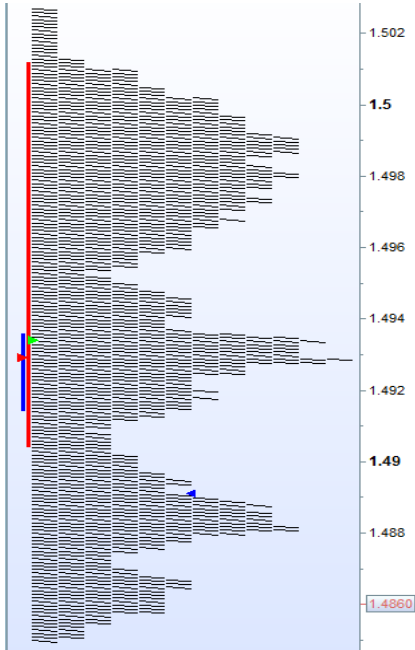
|           |               |
|-----------|---------------|
| Open      | 1.4930        |
| High      | 1.5027        |
| Low       | 1.4849        |
| Close     | 1.4883        |
| Change    | <b>-0.32%</b> |
| R3        | 1.5168        |
| R2        | 1.5098        |
| R1        | 1.4990        |
| PP        | <b>1.4920</b> |
| S1        | 1.4812        |
| S2        | 1.4742        |
| S3        | 1.4634        |
| Yest MPHI | 1.4974        |
| Yest POC  | 1.4934        |
| Yest MPLO | 1.4856        |
| 10 SMA    | 1.5109        |
| 20 SMA    | 1.5267        |
| 50 SMA    | 1.5208        |
| ATR       | <b>0.0125</b> |
| RSI       | <b>28</b>     |

GBPUSD  
FX Spot



13<sup>th</sup> March 2015

Yesterday's Market Profile



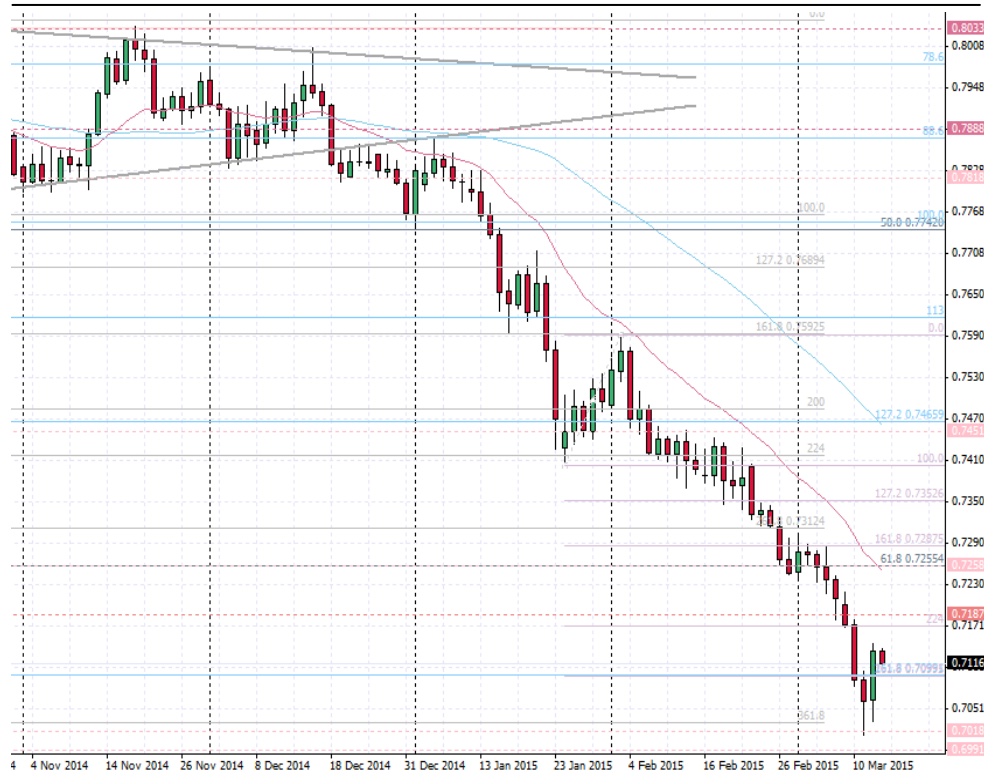
## Comment

- Short Term trend: Bearish
- Medium Term Trend: Bearish
- Candlestick Chart says: A volatile "High Wave" Doji day continued to new lows and is continuing lower in early trading below the 61.8Fibonacci of the rally from the 2009 lows to the 2014 highs and keeps the 2013 lows at 1.4812 as our next target. January lows at 1.4950 capped rallies on a close basis and keeps us looking lower.
- Profile charts say: A balanced day trended lower, POC at 1.4929
- Summary: Trending to new 2015 lows. Resistance 1.4937 Support 1.4812

## Chart Levels/SkewBar

|    |                  |
|----|------------------|
| R4 | 1.5115           |
| R3 | <b>1.5015-33</b> |
| R2 | <b>1.4937</b>    |
| R1 | 1.4892           |
| S1 | 1.4849           |
| S2 | <b>1.4812</b>    |
| S3 | 1.4786           |
| S4 | 1.4675           |

## Daily Candlestick Chart



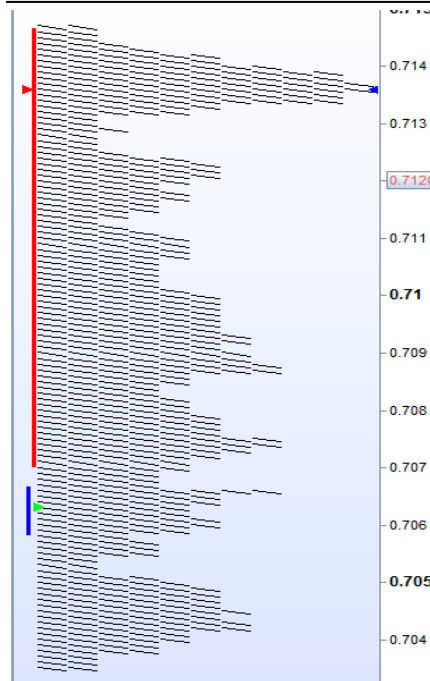
## Automated levels

|           |              |
|-----------|--------------|
| Open      | 7064         |
| High      | 7150         |
| Low       | 7034         |
| Close     | 7146         |
| Change    | <b>1.13%</b> |
| R3        | 7302         |
| R2        | 7226         |
| R1        | 7186         |
| PP        | <b>7110</b>  |
| S1        | 7070         |
| S2        | 6994         |
| S3        | 6954         |
| Yest MPHI | 7125         |
| Yest POC  | 7065         |
| Yest MPLO | 7055         |
| 10 SMA    | <b>7189</b>  |
| 20 SMA    | <b>7268</b>  |
| 50 SMA    | <b>7462</b>  |
| ATR       | <b>67</b>    |
| RSI       | 31           |

EURGBP  
FX Spot

**13<sup>th</sup> March 2015**

## Yesterday's Market Profile



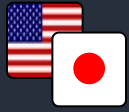
## Comment

- ☒ Short Term Trend: Bearish
- ☒ Medium Trend: Bearish
- ☒ Candlestick Charts say: A sharp bullish recovery confirms some profit taking against the 2006 high at 7018 has started a bit of a bounce. Bear market rallies can be fierce so we could see continuation higher with Friday flows. We recovered major Fibonacci confluence zone at 7099 and this could support.
- ☒ Profile charts say: A trend day with a high POC at 7136. Can the bulls sustain it? So far not in overnight trade...
- ☒ Summary: Support at a big level from 2006 at 7018 has started a bounce. *"Beware a snap back rally after such strong moves lower."*

## Chart Levels/SkewBar

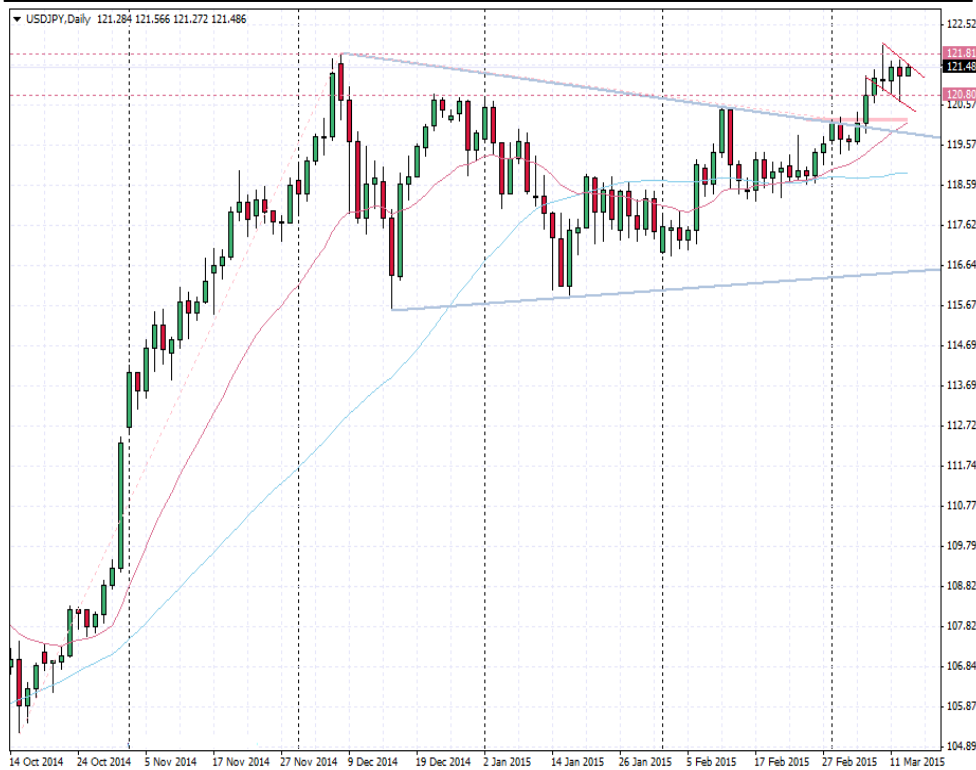
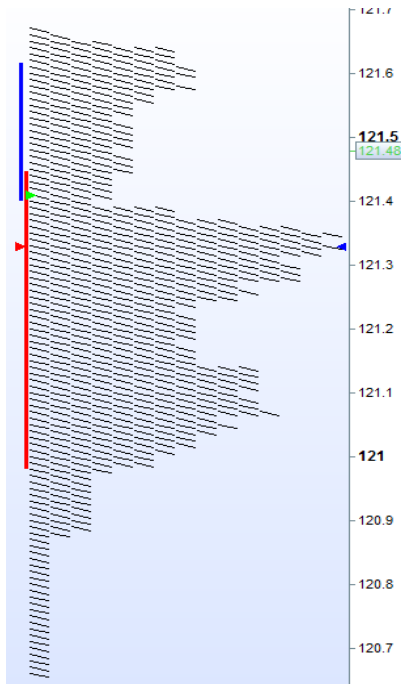
|    |                |
|----|----------------|
| R4 | <b>7233</b>    |
| R3 | 7187           |
| R2 | 7163           |
| R1 | <b>7146-50</b> |
| S1 | <b>7099</b>    |
| S2 | 7083           |
| S3 | <b>7018</b>    |
| S4 | <b>6990</b>    |

USDJPY  
FX Spot



13<sup>th</sup> March 2015

### Yesterday's Market Profile



|           |               |
|-----------|---------------|
| Open      | 121.44        |
| High      | 121.69        |
| Low       | 120.67        |
| Close     | 121.29        |
| Change    | <b>-0.13%</b> |
| R3        | 122.78        |
| R2        | 122.23        |
| R1        | 121.76        |
| PP        | <b>121.21</b> |
| S1        | 120.74        |
| S2        | 120.19        |
| S3        | 119.72        |
| Yest MPHI | 121.46        |
| Yest POC  | 121.12        |
| Yest MPLO | 120.97        |
| 10 SMA    | <b>120.70</b> |
| 20 SMA    | <b>119.86</b> |
| 50 SMA    | <b>118.92</b> |
| ATR       | <b>0.8184</b> |
| RSI       | 66            |


### Comment

- Short Term Trend: Bullish
- Medium Trend: Bullish
- Candlestick Chart says: Continued sideways trading below the 2014 highs at 121.81 now has the form of a bull flag pattern (see on 4hr chart) as we consolidate close to the highs but not able to recover them yet. Failure to retake this resistance means this could stay as a range trade and puts our breakout idea in jeopardy. Friday flows say we might not get this breakout today. Back above 121.80 confirms the 3 month consolidation wedge breakout as a big bullish pennant with an interim target of 124.
- Profile Charts say: Not adding too much. CHVN building at 121.40 and seems to be supporting overnight.
- Summary: Holding below 121.80, retaking it is the bulls main objective.

### Chart Levels/SkewBar

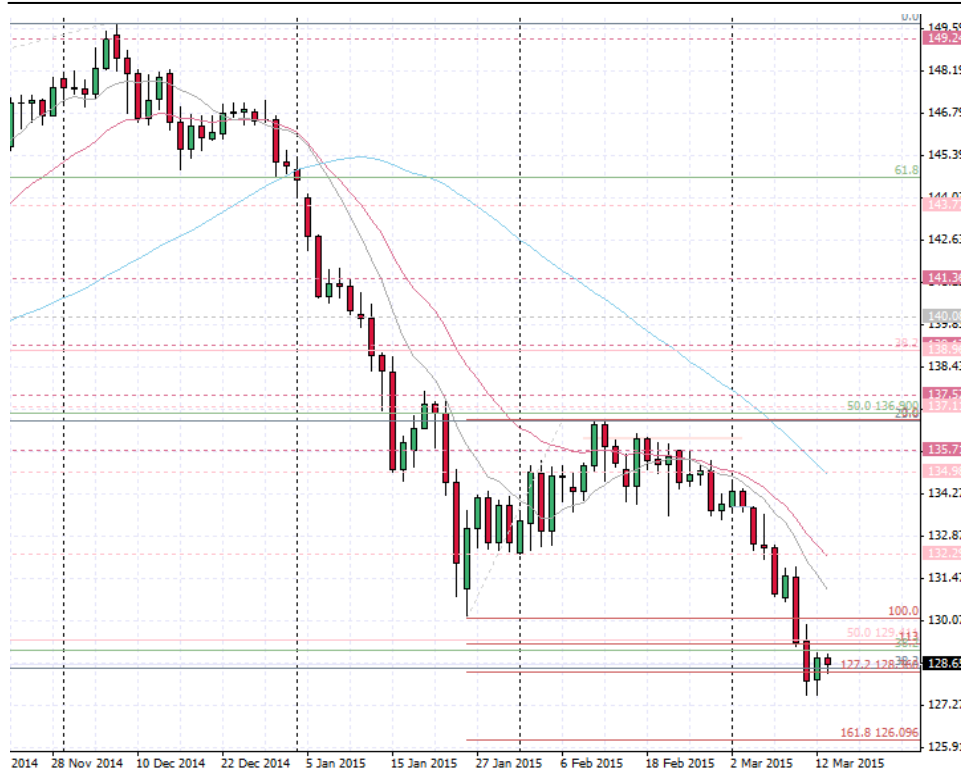
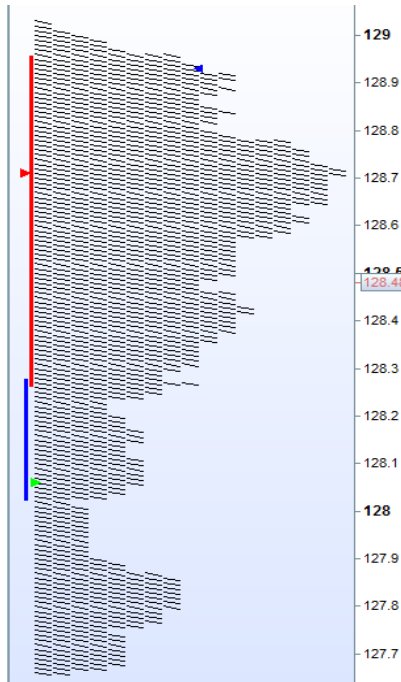
|    |               |
|----|---------------|
| R4 | 122.70        |
| R3 | 122.35        |
| R2 | <b>121.85</b> |
| R1 | 121.56        |
| S1 | 121.10        |
| S2 | 121.33        |
| S3 | <b>120.81</b> |
| S4 | <b>120.21</b> |

EURJPY  
FX Spot



13<sup>th</sup> March 2015

### Yesterday's Market Profile



### Comment

- Short Term Trend: Bearish
- Medium Term Trend: Bearish
- Candlestick charts say: An inside day, common after Wednesdays long "Marabuzo" managed to regain the 38.2Fibonacci and confluence support at 128.36-50 and closed above the Marabuzo line at 128.81 which takes away immediate bearish pressure. Friday flows and profit taking could see the 128.36-50 level as support today for continued back and fill higher and the January lows at 130.14 should cap any rallies if we are to trend lower from here. Targets lower are Fibonacci support at 126.10 and then the big 50% retracement (2012 low 2014 high) at 122.00
- Profile Charts say: Not adding much clarity, the POC at 128.71
- Summary: Inside day regained support and a moderately bullish close could mean a profit taking rally today. Key resistance 129.71 – 130.14

|           |               |
|-----------|---------------|
| Open      | 128.09        |
| High      | 129.05        |
| Low       | 127.66        |
| Close     | 128.99        |
| Change    | 0.69%         |
| R3        | 130.86        |
| R2        | 129.96        |
| R1        | 129.47        |
| PP        | <b>128.57</b> |
| S1        | 128.08        |
| S2        | 127.18        |
| S3        | 126.69        |
| Yest MPHI | 128.94        |
| Yest POC  | 128.62        |
| Yest MPLO | 128.16        |
| 10 SMA    | <b>131.08</b> |
| 20 SMA    | <b>132.98</b> |
| 50 SMA    | <b>134.93</b> |
| ATR       | <b>1.45</b>   |
| RSI       | <b>30</b>     |

### Chart Levels/SkewBar

|    |                  |
|----|------------------|
| R4 | <b>130.14</b>    |
| R3 | <b>129.71</b>    |
| R2 | 129.01           |
| R1 | 128.61           |
| S1 | <b>128.36-50</b> |
| S2 | 127.61           |
| S3 | 127.23           |
| S4 | <b>126.78</b>    |

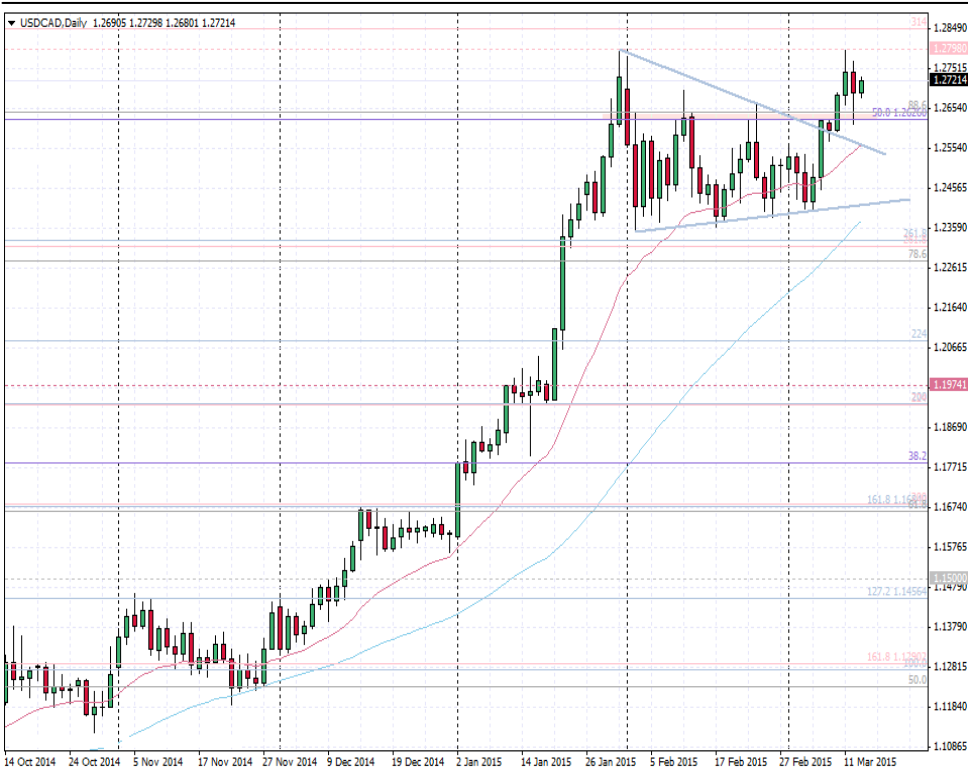
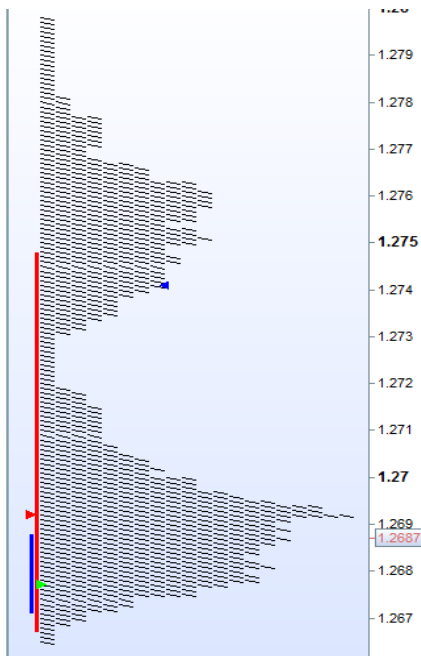
www.FuturesTechs.co.uk

USDCAD  
FX Spot



13<sup>th</sup> March 2015

Yesterday's Market Profile



|           |               |
|-----------|---------------|
| Open      | 1.2749        |
| High      | 1.2770        |
| Low       | 1.2617        |
| Close     | 1.2685        |
| Change    | <b>-0.51%</b> |
| R3        | 1.2917        |
| R2        | 1.2844        |
| R1        | 1.2764        |
| PP        | <b>1.2691</b> |
| S1        | 1.2611        |
| S2        | 1.2538        |
| S3        | 1.2458        |
| Yest MPHI | 1.2728        |
| Yest POC  | 1.2704        |
| Yest MPLO | 1.2642        |
| 10 SMA    | <b>1.2604</b> |
| 20 SMA    | <b>1.2545</b> |
| 50 SMA    | <b>1.2379</b> |
| ATR       | <b>0.0113</b> |
| RSI       | 63            |

### Chart Levels/SkewBar

|    |                  |
|----|------------------|
| R4 | 1.2909           |
| R3 | 1.2846-51        |
| R2 | <b>1.2799</b>    |
| R1 | 1.2737           |
| S1 | 1.2692           |
| S2 | <b>1.2625-30</b> |
| S3 | 1.2572           |
| S4 | <b>1.2529</b>    |

### Comment

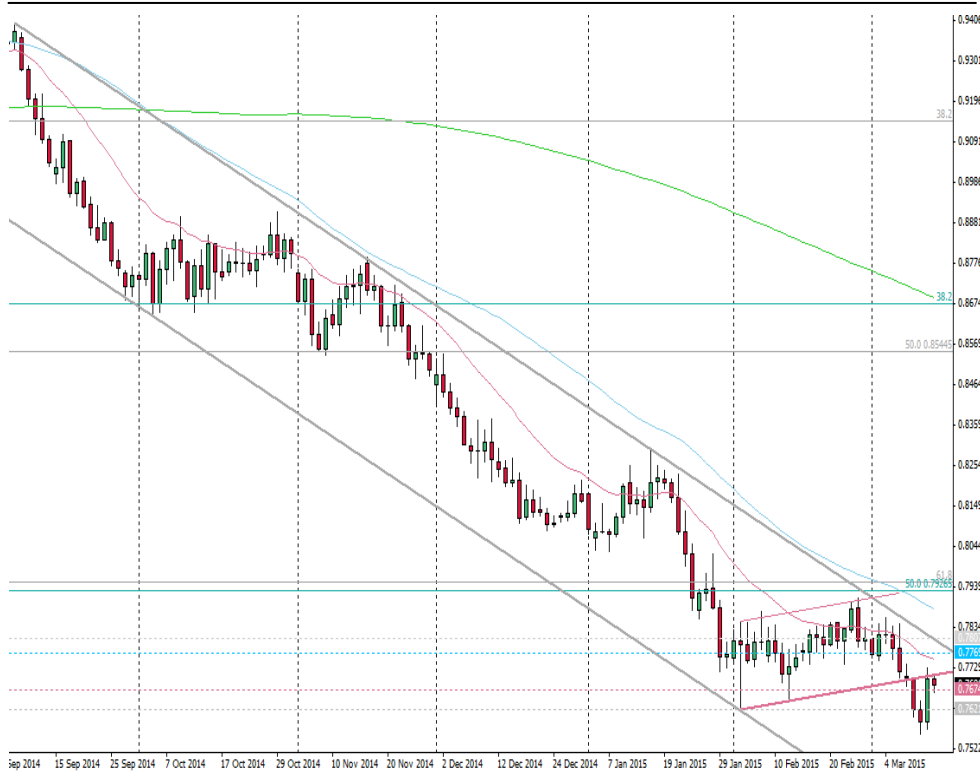
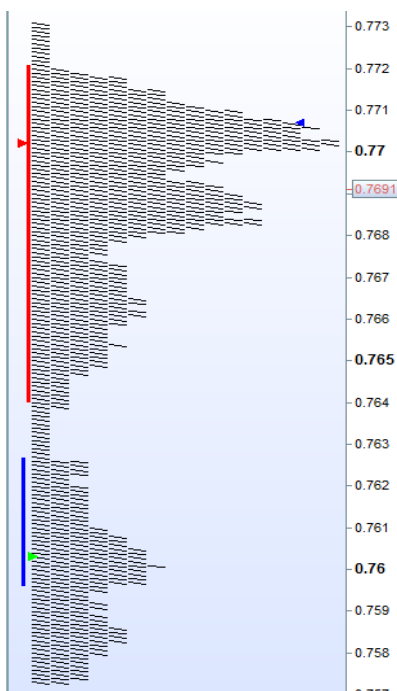
- ☒ Short Term Trend: Neutral
- ☒ Medium Trend: Bullish
- ☒ Candlestick Chart says: Sideways trading between two key levels. Above 1.2799 confirms this as a bullish pennant with big upside targets. Back below 1.2625 makes this a range trade and opens up the possibility of a double top. So the question is bull trend resumption or range trade. Friday flows mean we may have to postpone the answer until next week but todays Canadian jobs numbers may be the momentum that we need to break this and then a close outside the parameters decides it.
- ☒ Profile Chart says: A balanced day with POC at 1.2692 has been good support in early trading today
- ☒ Decision time. Or not.
- ☒ Trade Idea: We are long 1.2664, Stop 1.2564, targets 1.2798, 1.3075, 1.3450, Move stop to breakeven at 1.2798 as there is the potential for a double top here. "Keeper" Trade date: 10March2015

AUDUSD  
FX Spot



13<sup>th</sup> March 2015

Yesterday's Market Profile



|           |               |
|-----------|---------------|
| Open      | 0.7596        |
| High      | 0.7731        |
| Low       | 0.7573        |
| Close     | 0.7707        |
| Change    | 1.45%         |
| R3        | 0.7926        |
| R2        | 0.7828        |
| R1        | 0.7768        |
| PP        | <b>0.7670</b> |
| S1        | 0.7610        |
| S2        | 0.7512        |
| S3        | 0.7452        |
| Yest MPHI | 0.7729        |
| Yest POC  | 0.7683        |
| Yest MPLO | 0.7619        |
| 10 SMA    | <b>0.7717</b> |
| 20 SMA    | <b>0.7767</b> |
| 50 SMA    | <b>0.7885</b> |
| ATR       | <b>0.0094</b> |
| RSI       | 38            |

Chart Levels/SkewBar


|    |               |
|----|---------------|
| R4 | 0.7872        |
| R3 | <b>0.7770</b> |
| R2 | 0.7730-34     |
| R1 | <b>0.7700</b> |
| S1 | 0.7667        |
| S2 | 0.7645        |
| S3 | 0.7629        |
| S4 | <b>0.7557</b> |

Comment

- Short Term Trend: Neutral – Bearish
- Medium Trend: Bearish
- Candlestick Chart says: A bullish “Marabuzo”. The bear flag breakdown has been completely reversed to retest the breakdown level at 0.7700. It has held as resistance on a close basis and as long as it does the bear flag is valid. The sharp rally is a bit of a concern so see if the Marabuzo line at 0.7645 holds as support today, if it does we risk a continued move higher to test the channel rail again. Continuing lower has swing targets at 0.7440 and 0.7150. Out of the channel negates the bearish view.
- Profile Charts say: POC at 0.7702 confirms the importance of this level. Vacuum between 0.8629 and 0.7637 might do a job as support...
- Summary: Bear flag breakdown is retesting break out at 0.7700
- Trade Idea: We are short at 0.7674 Move stop to 0.7744, Targets 0.7625 (hit) 0.7450 and 0.7150 “Keeper” Trade date 10March15

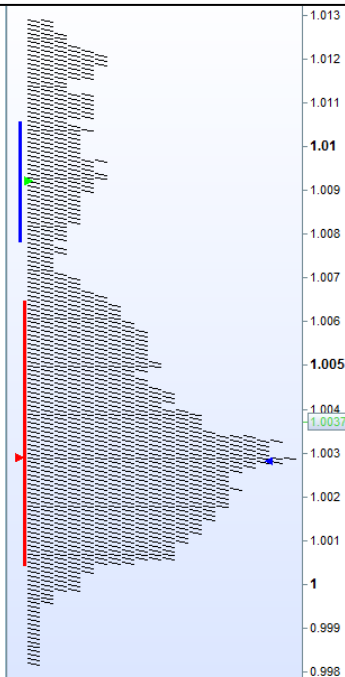


USDCHF  
FX Spot

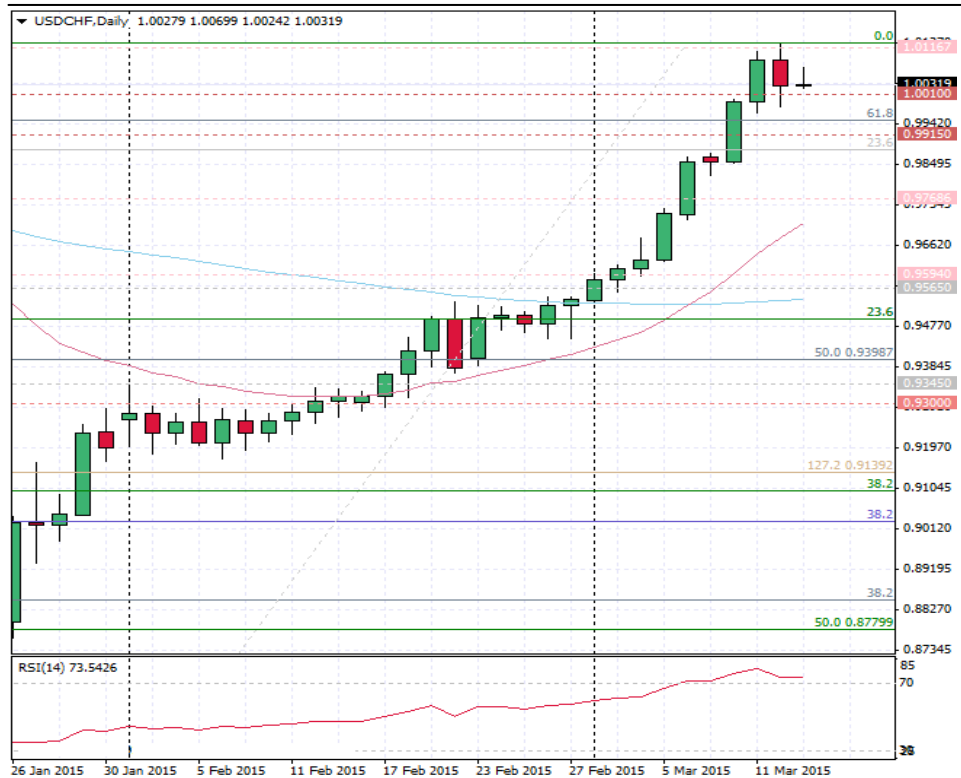


13<sup>th</sup> March 2015

Yesterday's Market Profile



Daily Candlestick Chart



Comment







- ☒ Yesterday: *"Beware some chop around the parity level, big round numbers can do that"*
- ☒ Candlestick Chart says: Bearish "Dark Cloud Cover" reversal pattern where the market makes a new high then closes below 50% of the previous days open-close warns of profit taking and this pair is still in lock step with EURUSD (thanks SNB). Big round number 1.00 should be support on any continuation lower, and next Marabuzo line is at 0.9923.
- ☒ Profile Charts say: The vacuum starting around parity level adds weight to that level as support. POC at 1.0029 has held as support overnight
- ☒ Summary: Bearish reversal signal in a parabolic uptrend ... the correction might be sharp too.

Automated levels

|           |               |
|-----------|---------------|
| Open      | 1.0093        |
| High      | 1.0130        |
| Low       | 0.9982        |
| Close     | 1.0021        |
| Change    | <b>-0.71%</b> |
| R3        | 1.0255        |
| R2        | 1.0192        |
| R1        | 1.0107        |
| PP        | <b>1.0044</b> |
| S1        | 0.9959        |
| S2        | 0.9896        |
| S3        | 0.9811        |
| Yest MPHI | 1.007         |
| Yest POC  | 1.0022        |
| Yest MPLO | 1             |
| 10 SMA    | <b>0.9847</b> |
| 20 SMA    | <b>0.9651</b> |
| 50 SMA    | <b>0.9461</b> |
| ATR       | <b>0.0105</b> |
| RSI       | <b>74</b>     |

Chart Levels/SkewBar

|    |               |
|----|---------------|
| R4 | 1.0218        |
| R3 | 1.0167        |
| R2 | <b>1.0117</b> |
| R1 | 1.0061        |
| S1 | 1.0029        |
| S2 | <b>1.0000</b> |
| S3 | 0.9923        |
| S4 | 0.9915        |

| EURCHF  |               | EURCNY  |              | EURSEK  |               | EURPLN  |               | EURNOK  |               | EURTRY  |               |
|--|---------------|--|--------------|--|---------------|--|---------------|--|---------------|--|---------------|
| Spot   |               | Spot   |              | Spot   |               | Spot   |               | Spot   |               | Spot   |               |
| Open   | 1.0645        | Open   | 6.61         | Open   | 9.1091        | Open   | 4.1228        | Open   | 8.6571        | Open   | 2.75          |
| High   | 1.0683        | High   | 6.69         | High   | 9.1703        | High   | 4.1487        | High   | 8.6574        | High   | 2.76          |
| Low  | 1.0621        | Low  | 6.57         | Low  | 9.0550        | Low  | 4.1194        | Low  | 8.5861        | Low  | 2.74          |
| Close  | 1.0659        | Close  | 6.66         | Close  | 9.1337        | Close  | 4.1422        | Close  | 8.6162        | Close  | 2.75          |
| Change   | <b>0.12%</b>  | Change   | <b>0.89%</b> | Change   | <b>0.29%</b>  | Change   | <b>0.47%</b>  | Change   | <b>-0.47%</b> | Change   | <b>-0.17%</b> |
| R3   | 1.0750        | R3   | 6.84         | R3   | 9.2996        | R3   | 4.1834        | R3   | 8.7250        | R3   | 2.79          |
| R2   | 1.0716        | R2   | 6.76         | R2   | 9.2350        | R2   | 4.1661        | R2   | 8.6912        | R2   | 2.78          |
| R1   | 1.0688        | R1   | 6.71         | R1   | 9.1843        | R1   | 4.1541        | R1   | 8.6537        | R1   | 2.76          |
| PP   | <b>1.0654</b> | PP   | <b>6.64</b>  | PP   | <b>9.1197</b> | PP   | <b>4.1368</b> | PP   | <b>8.6199</b> | PP   | <b>2.75</b>   |
| S1   | 1.0626        | S1   | 6.59         | S1   | 9.0690        | S1   | 4.1248        | S1   | 8.5824        | S1   | 2.74          |
| S2   | 1.0592        | S2   | 6.52         | S2   | 9.0044        | S2   | 4.1075        | S2   | 8.5486        | S2   | 2.72          |
| S3   | 1.0564        | S3   | 6.47         | S3   | 8.9537        | S3   | 4.0955        | S3   | 8.5111        | S3   | 2.71          |
| MPHI   | 1.0653        | Yest MPHI  | 6.67         | MPHI   | 9.1317        | MPHI   | 4.1374        | Yest MPHI  | 8.6294        | Yest MPHI  | 2.76          |
| POC  | 1.0641        | Yest POC   | 6.64         | POC  | 9.0983        | POC  | 4.1236        | Yest POC   | 8.612         | Yest POC   | 2.75          |
| MPLO   | 1.0631        | Yest MPLO  | 6.61         | MPLO   | 9.0729        | MPLO   | 4.1214        | Yest MPLO  | 8.5914        | Yest MPLO  | 2.74          |
| 10 SMA   | <b>1.0692</b> | 10 SMA   | <b>6.81</b>  | 10 SMA   | <b>9.1930</b> | 10 SMA   | <b>4.1454</b> | 10 SMA   | 8.6088        | 10 SMA   | <b>2.81</b>   |
| 20 SMA   | <b>1.0703</b> | 20 SMA   | <b>6.95</b>  | 20 SMA   | <b>9.3442</b> | 20 SMA   | <b>4.1571</b> | 20 SMA   | 8.6001        | 20 SMA   | <b>2.81</b>   |
| 50 SMA   | <b>1.0736</b> | 50 SMA   | <b>7.08</b>  | 50 SMA   | <b>9.4047</b> | 50 SMA   | <b>4.2073</b> | 50 SMA   | 8.7338        | 50 SMA   | <b>2.77</b>   |
| ATR  | <b>0.0080</b> | ATR  | <b>0.09</b>  | ATR  | <b>0.0669</b> | ATR  | <b>0.0325</b> | ATR  | <b>0.0692</b> | ATR  | <b>0.04</b>   |
| RSI  | 46            | RSI  | <b>23</b>    | RSI  | 33            | RSI  | 49            | RSI  | 48            | RSI  | 48            |
| Ticker   | <b>ESI</b>    | Ticker   | <b>ERN</b>   | Ticker   | <b>ESW</b>    | Ticker   | <b>EPO</b>    | Ticker   | <b>ENO</b>    | Ticker   | <b>ELI</b>    |

**KEY: Open, High, Low, Close, Change** – For the previous session – pretty self explanatory!







**Pivot Points (R3, R2, R1, PP, S1, S2, S3)** These are calculated using the previous day's high, low and close, as used by Pit Traders for years.

**MPHi, POC, MPLow** – Market Profile levels. These are the previous day's Value Area High, Point of Control, and Value Area Low, widely referenced by Professional traders.

**10, 20 and 50 day SMA** – These are the Simple Moving Averages for three different time periods. The 10 day SMA is the last 10 days closes added together and divided by 10. Green numbers denote positive alignment, Red is negative alignment, which offers a trend indication.

**ATR** – Stands for "Average True Range" and is (in simple terms) the average daily range, in this case over the last 10 sessions.

**RSI** – The "Relative Strength Index", a momentum study, divides up days by down days to give a ratio to track momentum. Readings under 30 (red) suggest the market is oversold, readings over 70 (green) tell us it's overbought.

| EURCZK  |        | EURHUF  |        | EURDKK  |        | USDCNY  |        | USDINR  |        | USDILS  |        |
|--|--------|--|--------|--|--------|--|--------|--|--------|--|--------|
| Spot   |        | Spot   |        | Spot   |        | Spot   |        | Spot   |        | Spot   |        |
| Open   | 27.26  | Open   | 303.18 | Open   | 7.4544 | Open   | 6.2620 | Open   | 62.77  | Open   | 4.04   |
| High   | 27.34  | High   | 304.49 | High   | 7.4603 | High   | 6.2683 | High   | 62.79  | High   | 4.05   |
| Low  | 27.24  | Low  | 302.79 | Low  | 7.4532 | Low  | 6.2570 | Low  | 62.39  | Low  | 4.00   |
| Close  | 27.31  | Close  | 303.98 | Close  | 7.4577 | Close  | 6.2652 | Close  | 62.54  | Close  | 4.00   |
| Change   | 0.19%  | Change   | 0.26%  | Change   | 0.04%  | Change   | 0.05%  | Change   | -0.38% | Change   | -1.00% |
| R3   | 27.46  | R3   | 306.42 | R3   | 7.4680 | R3   | 6.2813 | R3   | 63.16  | R3   | 4.09   |
| R2   | 27.40  | R2   | 305.45 | R2   | 7.4642 | R2   | 6.2748 | R2   | 62.97  | R2   | 4.07   |
| R1   | 27.36  | R1   | 304.72 | R1   | 7.4609 | R1   | 6.2700 | R1   | 62.76  | R1   | 4.03   |
| PP   | 27.30  | PP   | 303.75 | PP   | 7.4571 | PP   | 6.2635 | PP   | 62.57  | PP   | 4.01   |
| S1   | 27.25  | S1   | 303.02 | S1   | 7.4538 | S1   | 6.2587 | S1   | 62.36  | S1   | 3.98   |
| S2   | 27.20  | S2   | 302.05 | S2   | 7.4500 | S2   | 6.2522 | S2   | 62.17  | S2   | 3.96   |
| S3   | 27.15  | S3   | 301.32 | S3   | 7.4467 | S3   | 6.2474 | S3   | 61.96  | S3   | 3.93   |
| MPHI   | 27.305 | MPHI   | 303.84 | MPHI   | 7.4568 | Yest MPHI  | 6.2644 | Yest MPHI  | 62.61  | Yest MPHI  | 4.03   |
| POC  | 27.267 | POC  | 303.36 | POC  | 7.4548 | Yest POC   | 6.2626 | Yest POC   | 62.51  | Yest POC   | 4.02   |
| MPLO   | 27.241 | MPLO   | 303.08 | MPLO   | 7.4536 | Yest MPLO  | 6.2606 | Yest MPLO  | 62.41  | Yest MPLO  | 4.00   |
| 10DMA  | 27.35  | 10 SMA   | 305.63 | 10 SMA   | 7.4532 | 10 SMA   | 6.2650 | 10 SMA   | 62.49  | 10 SMA   | 4.01   |
| 20DMA  | 27.41  | 20 SMA   | 305.45 | 20 SMA   | 7.4543 | 20 SMA   | 6.2610 | 20 SMA   | 62.26  | 20 SMA   | 3.96   |
| 25DMA  | 27.66  | 50 SMA   | 310.07 | 50 SMA   | 7.4465 | 50 SMA   | 6.2414 | 50 SMA   | 62.10  | 50 SMA   | 3.94   |
| ATR  | 0.10   | ATR  | 2.88   | ATR  | 0.0090 | ATR  | 0.0154 | ATR  | 0.41   | ATR  | 0.03   |
| RSI  | 39     | RSI  | 52     | RSI  | 57     | RSI  | 53     | RSI  | 64     | RSI  | 61     |
| Ticker   | EZK    | Ticker   | EFT    | Ticker   | EDK    | Ticker   | UCR    | Ticker   | INR    | Ticker   | IUS    |

**KEY: Open, High, Low, Close, Change** – For the previous session – pretty self explanatory!







**Pivot Points (R3, R2, R1, PP, S1, S2, S3)** These are calculated using the previous day's high, low and close, as used by Pit Traders for years.

**MPHi, POC, MPLO** – Market Profile levels. These are the previous day's Value Area High, Point of Control, and Value Area Low, widely referenced by Professional traders.

**10, 20 and 50 day SMA** – These are the Simple Moving Averages for three different time periods. The 10 day SMA is the last 10 days closes added together and divided by 10. Green numbers denote positive alignment, Red is negative alignment, which offers a trend indication.

**ATR** – Stands for "Average True Range" and is (in simple terms) the average daily range, in this case over the last 10 sessions.

**RSI** – The "Relative Strength Index", a momentum study, divides up days by down days to give a ratio to track momentum. Readings under 30 (red) suggest the market is oversold, readings over 70 (green) tell us it's overbought.

| USDKRW  |                 | USDMXN  |               | NZDUSD  |               | USDTRY  |               | USDZAR  |              | USDRUB  |               |
|--|-----------------|--|---------------|--|---------------|--|---------------|--|--------------|--|---------------|
| Spot   |                 | Spot   |               | Spot   |               | Spot   |               | Spot   |              | Spot   |               |
| Open   | 1,131.90        | Open   | 15.50         | Open   | 0.7293        | Open   | 2.61          | Open   | 12.28        | Open   | 62.11         |
| High   | 1,135.90        | High   | 15.51         | High   | 0.7445        | High   | 2.61          | High   | 12.33        | High   | 62.30         |
| Low  | 1,118.60        | Low  | 15.35         | Low  | 0.7273        | Low  | 2.58          | Low  | 12.15        | Low  | 60.28         |
| Close  | 1,125.60        | Close  | 15.39         | Close  | 0.7387        | Close  | 2.58          | Close  | 12.30        | Close  | 61.33         |
| Change   | <b>-0.57%</b>   | Change   | <b>-0.69%</b> | Change   | <b>1.26%</b>  | Change   | <b>-1.03%</b> | Change   | <b>0.12%</b> | Change   | <b>-1.26%</b> |
| R3   | 1,152.10        | R3   | 15.64         | R3   | 0.7636        | R3   | 2.63          | R3   | 12.56        | R3   | 64.34         |
| R2   | 1,144.00        | R2   | 15.58         | R2   | 0.7540        | R2   | 2.62          | R2   | 12.44        | R2   | 63.32         |
| R1   | 1,134.80        | R1   | 15.48         | R1   | 0.7464        | R1   | 2.60          | R1   | 12.37        | R1   | 62.33         |
| PP   | <b>1,126.70</b> | PP   | <b>15.42</b>  | PP   | <b>0.7368</b> | PP   | <b>2.59</b>   | PP   | <b>12.26</b> | PP   | <b>61.31</b>  |
| S1   | 1,117.50        | S1   | 15.32         | S1   | 0.7292        | S1   | 2.57          | S1   | 12.19        | S1   | 60.31         |
| S2   | 1,109.40        | S2   | 15.25         | S2   | 0.7196        | S2   | 2.56          | S2   | 12.08        | S2   | 59.29         |
| S3   | 1,100.20        | S3   | 15.16         | S3   | 0.7120        | S3   | 2.54          | S3   | 12.00        | S3   | 58.29         |
| Yest MPHi  | 1,130.80        | Yest MPHi  | 15.47         | Yest MPHi  | 0.7441        | Yest MPHi  | 2.60          | Yest MPHi  | 12.31        | Yest MPHi  | 62.25         |
| Yest POC   | 1,125.20        | Yest POC   | 15.44         | Yest POC   | 0.7401        | Yest POC   | 2.59          | Yest POC   | 12.26        | Yest POC   | 61.68         |
| Yest MPLow   | 1,119.60        | Yest MPLow   | 15.38         | Yest MPLow   | 0.7323        | Yest MPLow   | 2.59          | Yest MPLow   | 12.21        | Yest MPLow   | 61.16         |
| 10 SMA   | <b>1,114.92</b> | 10 SMA   | <b>15.33</b>  | 10 SMA   | <b>0.7414</b> | 10 SMA   | <b>2.59</b>   | 10 SMA   | <b>12.07</b> | 10 SMA   | <b>61.50</b>  |
| 20 SMA   | <b>1,110.47</b> | 20 SMA   | <b>15.14</b>  | 20 SMA   | <b>0.7472</b> | 20 SMA   | <b>2.53</b>   | 20 SMA   | <b>11.83</b> | 20 SMA   | <b>61.93</b>  |
| 50 SMA   | <b>1,098.48</b> | 50 SMA   | <b>14.91</b>  | 50 SMA   | <b>0.7513</b> | 50 SMA   | <b>2.44</b>   | 50 SMA   | <b>11.67</b> | 50 SMA   | <b>63.95</b>  |
| ATR  | <b>10.61</b>    | ATR  | <b>0.19</b>   | ATR  | <b>0.0108</b> | ATR  | <b>0.04</b>   | ATR  | <b>0.18</b>  | ATR  | <b>1.87</b>   |
| RSI  | 69              | RSI  | 66            | RSI  | 40            | RSI  | 69            | RSI  | <b>75</b>    | RSI  | 44            |
| Ticker   | <b>UKW</b>      | Ticker   | <b>MXN</b>    | Ticker   | <b>NZD</b>    | Ticker   | <b>UTL</b>    | Ticker   | <b>ZRA</b>   | Ticker   | <b>RUB</b>    |

**KEY: Open, High, Low, Close, Change** – For the previous session – pretty self explanatory!

**Pivot Points (R3, R2, R1, PP, S1, S2, S3)** These are calculated using the previous day's high, low and close, as used by Pit Traders for years.

**MPHi, POC, MPLow** – Market Profile levels. These are the previous day's Value Area High, Point of Control, and Value Area Low, widely referenced by Professional traders.

**10, 20 and 50 day SMA** – These are the Simple Moving Averages for three different time periods. The 10 day SMA is the last 10 days closes added together and divided by 10. Green numbers denote positive alignment, Red is negative alignment, which offers a trend indication.

**ATR** – Stands for "Average True Range" and is (in simple terms) the average daily range, in this case over the last 10 sessions.

**RSI** – The "Relative Strength Index", a momentum study, divides up days by down days to give a ratio to track momentum. Readings under 30 (red) suggest the market is oversold, readings over 70 (green) tell us it's overbought.



[www.FuturesTechs.co.uk](http://www.FuturesTechs.co.uk)

Disclaimer:

FuturesTechs.com Ltd is Authorised & Regulated by the Financial Conduct Authority.

This document is exclusively for the use of the person to whom it has been sent by email from FuturesTechs.com Ltd. The client will have been classified prior to as a private or an intermediate client. If an intermediate client you will be aware of the FCA and FOS services not provided. This communication has been prepared solely for information and data purposes and is not intended as an Invitation or Inducement with respect to the purchase or sale of any financial instrument. This communication should not be regarded as a substitute for the exercise by the recipient of its own judgement. Any reliance placed on the communication is at the reader's risk. Information and opinions have been obtained from sources believed to be reliable but no representation is made to their accuracy.

© 2000-15 FuturesTechs.com Ltd. No copy can be taken without prior written permission.  
Charts © CQG, Inc. All rights reserved worldwide.



FuturesTechs is proud to support Futures for Kids. Please go to [www.futuresforkids.org.uk](http://www.futuresforkids.org.uk) to see what **YOU** can do!